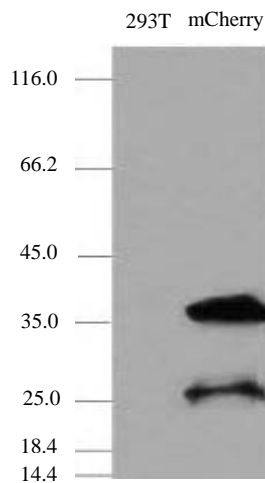


TA-07 Mouse Anti-mCherry mAb

Immunogen	Recombinant mCherry protein expressed in HEK293 cells.
Product name	Mouse anti-mCherry monoclonal antibody
Clone	OTI10G6
Isotype	IgG1
Amount	0.1 ml
Reactivity	The anti-mCherry antibody recognizes over expressed recombinant proteins containing the mCherry tag fused proteins in transfected mammalian cells or other expression systems. Note: This antibody cross react with mBanana, mOrange, mStrawberry, tdTomato test by WB.
Storage/Stability	Stable for 1 year at -20°C from date of shipment. For maximum recovery of product, centrifuge the original vial after thawing and prior to opening the cap. Avoid repeated freeze-thaws.
Application	WB
Suggested dilutions	1:1000-1:2000

Experimental data



HEK293T cells were transfected with the pCMV6-ENTRY control (Left lane) or pCMV6-ENTRY mCherry (Right lane) cDNA for 48 hrs and lysed. Equivalent amounts of cell lysates (5 ug per lane) were separated by SDS-PAGE and immunoblotted with anti-mCherry 1:1000

Notes: This product is to be used for laboratory only. Not for diagnostic use.

