

Product datasheet for TA327962

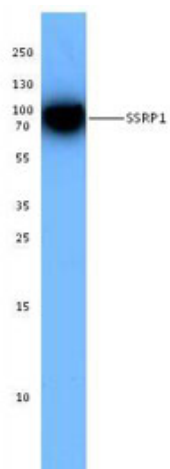
SSRP1 Mouse Monoclonal Antibody [Clone ID: 3E4]

Product data:

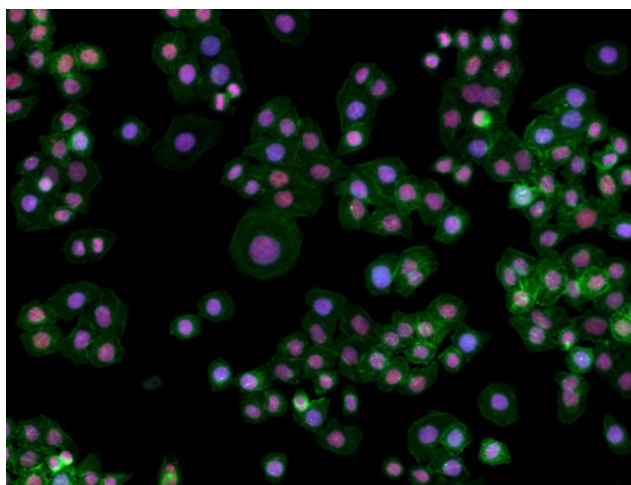
Product Type:	Primary Antibodies
Clone Name:	3E4
Applications:	IF, WB
Recommend Dilution:	WB, IP, IF
Reactivity:	Human
Host:	Mouse
Isotype:	IgG1, kappa
Clonality:	Monoclonal
Immunogen:	Recombinant (partial)
Formulation:	This antibody is provided in phosphate-buffered solution, pH 7.2, containing 0.09% sodium azide at 0.5 mg/ml.
Concentration:	0.5 mg/ml
Purification:	The antibody was purified by affinity chromatography.
Predicted Protein Size:	81 kD
Gene Name:	structure specific recognition protein 1
Database Link:	NP_003137 Entrez Gene 6749 Human
Background:	SSRP1 is a nuclear protein and a component of the FACT complex (facilitates chromatin transcription). The FACT140 complex is composed of the Spt16 and the SSRP1 proteins. This complex interacts with nucleosomes and histone H2A/H2B dimers to promote nucleosome disassembly and allow transcription elongation. This protein interacts with dsDNA. The SSRP1 protein has been shown to be modified by cisplatin and may protect DNA from repair and block DNA replication. The 3E4 monoclonal antibody recognizes human SSRP1 and has been shown to be useful for Western blotting.
Synonyms:	FACT; FACT80; T160
Protein Families:	Transcription Factors



[View online »](#)

Product images:

293E cell extracts were resolved by electrophoresis, transferred to nitrocellulose, and probed with purified anti-SSRP1 Antibody (clone 3E4). Proteins were visualized using a goat anti-mouse-IgG secondary conjugated to HRP and chemiluminescence detection.



HeLa cells were fixed with 1% paraformaldehyde (PFA) for 10 minutes, permeabilized with 0.5% Triton X-100 for 10 minutes, and blocked with 5% FBS for 30 minutes. Then the cells were intracellularly stained with 5 ug/ml of purified anti-SSRP1 (clone 3E4) in blocking buffer overnight at 4°C, followed by DyLight™ 594 anti-mouse IgG (red) and Alexa Fluor® 488 Phalloidin (green) staining for 20 minutes. Nuclei were counterstained with DAPI (blue).