

Product datasheet for **TA336398**

IKK gamma (IKBK γ) Mouse Monoclonal Antibody [Clone ID: 72C627]

Product data:

Product Type:	Primary Antibodies
Clone Name:	72C627
Applications:	WB
Recommend Dilution:	WB: 2-5 ug/ml
Reactivity:	Human, Mouse
Host:	Mouse
Isotype:	IgG1
Clonality:	Monoclonal
Immunogen:	This antibody was raised against a His-tagged full-length human IKK3/IKKg protein.
Formulation:	PBS containing 0.05% BSA, 0.05% Sodium Azide. Store at 4C short term. Aliquot and store at -20C long term. Avoid freeze-thaw cycles.
Concentration:	0.5 mg/ml
Purification:	Protein G purified
Gene Name:	inhibitor of kappa light polypeptide gene enhancer in B-cells, kinase gamma
Database Link:	NP_001093326 Entrez Gene 16151 Mouse Entrez Gene 8517 Human
Background:	NF- κ B (nuclear factor κ B) is sequestered in the cytoplasm by I κ B family of inhibitory proteins that mask the nuclear localization signal of NF- κ B thereby preventing translocation of NF- κ B to the nucleus. External stimuli such as tumor necrosis factor or other cytokines results in phosphorylation and degradation of I κ B releasing NF- κ B dimers. NF- κ B dimer subsequently translocates to the nucleus and activates target genes. Synthesis of I κ Ba is autoregulated. I κ B proteins are phosphorylated by I κ B kinase complex consisting of at least three proteins, IKK1/a, IKK2/b, and IKK3/g. IKK3/g preferentially interacts with IKK2/b and is required for activation of IKK complex. IKK3/g is also known as NEMO (NF- κ B Essential MODulator). Recent data suggest that the human T-cell leukemia virus type I Tax oncoprotein that activates NF- κ B binds neither to IKKa nor IKKb, but complexes directly with IKKg. This suggests that IKKg may be a key molecule acting as an adapter for onco-protein specific signaling to IKKa and IKKb.
Synonyms:	AMCBX1; FIP-3; FIP3; Fip3p; IKK-gamma; IKKAP1; IKKG; IMD33; IP; IP1; IP2; IPD2; NEMO; ZC2HC9

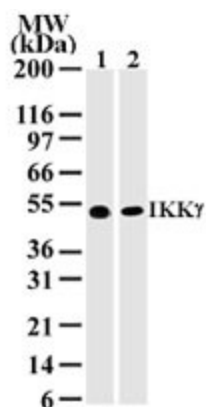


[View online »](#)

Protein Families: Druggable Genome, Transcription Factors

Protein Pathways: Acute myeloid leukemia, Adipocytokine signaling pathway, Apoptosis, B cell receptor signaling pathway, Chemokine signaling pathway, Chronic myeloid leukemia, Cytosolic DNA-sensing pathway, Epithelial cell signaling in Helicobacter pylori infection, MAPK signaling pathway, NOD-like receptor signaling pathway, Pancreatic cancer, Pathways in cancer, Primary immunodeficiency, Prostate cancer, RIG-I-like receptor signaling pathway, Small cell lung cancer, T cell receptor signaling pathway, Toll-like receptor signaling pathway

Product images:



Western Blot: IKK-gamma Antibody (72C627) TA336398 - Analysis using IKK gamma (NEMO) antibody. Lysate from 1) human Jurkat and 2) mouse NIH 3T3 cells probed with IKK gamma antibody at 2 ug/ml.