

Product datasheet for TA346889

SMARCC1 Mouse Monoclonal Antibody [Clone ID: 2A4-H7-C12]

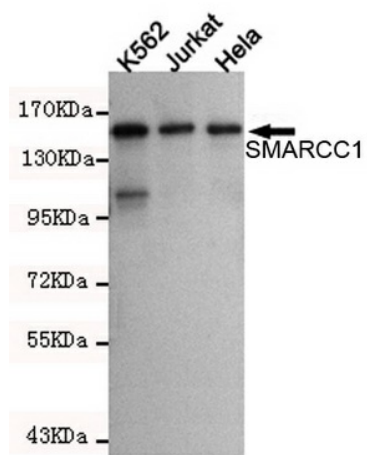
Product data:

Product Type:	Primary Antibodies
Clone Name:	2A4-H7-C12
Applications:	WB
Recommend Dilution:	WB: 1:1000
Reactivity:	Human
Host:	Mouse
Isotype:	IgG1
Clonality:	Monoclonal
Immunogen:	The immunogen for BAF155 antibody: purified recombinant human SMARCC1 protein fragments expressed in E.coli.
Formulation:	Purified mouse monoclonal in PBS(pH 7.4) containing with 0.02% sodium azide and 50% glycerol.
Purification:	Affinity purified
Predicted Protein Size:	155 kDa
Gene Name:	SWI/SNF related, matrix associated, actin dependent regulator of chromatin subfamily c member 1
Database Link:	NP_003065 Entrez Gene 6599 Human
Background:	The protein encoded by this gene is a member of the SWI/SNF family of proteins, whose members display helicase and ATPase activities and which are thought to regulate transcription of certain genes by altering the chromatin structure around those genes. The encoded protein is part of the large ATP-dependent chromatin remodeling complex SNF/SWI and contains a predicted leucine zipper motif typical of many transcription factors. [provided by RefSeq, Jul 2008]
Synonyms:	BAF155; CRACC1; Rsc8; SRG3; SWI3
Protein Families:	Stem cell - Pluripotency, Transcription Factors



[View online »](#)

Product images:



Western blot detection of SMARCC1 in K562, Jurkat and HeLa cell lysates using SMARCC1 mouse mAb (1:1000 diluted). Predicted band size: 155KDa. Observed band size: 155KDa.