

Product datasheet for TA346891

BAX Mouse Monoclonal Antibody [Clone ID: 2B12-G6-H6]

Product data:

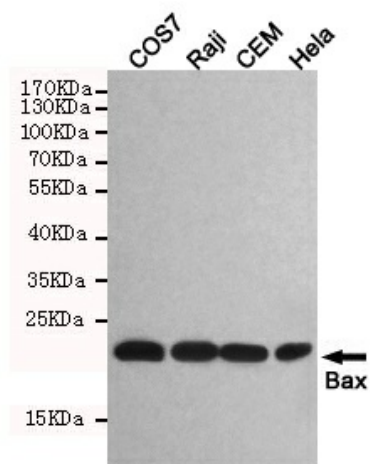
Product Type:	Primary Antibodies
Clone Name:	2B12-G6-H6
Applications:	WB
Recommend Dilution:	WB: 1:1000
Reactivity:	Human, Monkey
Host:	Mouse
Isotype:	IgG2a
Clonality:	Monoclonal
Immunogen:	The immunogen for BAX antibody: purified recombinant human Bax protein fragments expressed in E.coli
Formulation:	Purified mouse monoclonal antibody in PBS(pH 7.4) containing with 0.02% sodium azide and 50% glycerol.
Purification:	Affinity purified
Predicted Protein Size:	20 kDa
Gene Name:	BCL2 associated X protein
Database Link:	NP_620116 Entrez Gene 718948 Monkey Entrez Gene 581 Human
Background:	The protein encoded by this gene belongs to the BCL2 protein family. BCL2 family members form hetero- or homodimers and act as anti- or pro-apoptotic regulators that are involved in a wide variety of cellular activities. This protein forms a heterodimer with BCL2, and functions as an apoptotic activator. This protein is reported to interact with, and increase the opening of, the mitochondrial voltage-dependent anion channel (VDAC), which leads to the loss in membrane potential and the release of cytochrome c. The expression of this gene is regulated by the tumor suppressor P53 and has been shown to be involved in P53-mediated apoptosis. Multiple alternatively spliced transcript variants, which encode different isoforms, have been reported for this gene. (provided by RefSeq, Jul 2008).
Synonyms:	BCL2L4
Protein Families:	Druggable Genome, Transmembrane



[View online »](#)

Protein Pathways: Amyotrophic lateral sclerosis (ALS), Apoptosis, Colorectal cancer, Huntington's disease, Neurotrophin signaling pathway, p53 signaling pathway, Pathways in cancer, Prion diseases

Product images:



Western blot detection of Bax in COS7, Raji, CEM and HeLa cell lysates using Bax mouse mAb (1:1000 diluted). Predicted band size:20kDa. Observed band size:20kDa.