

Product datasheet for TA346894

beta Actin (ACTB) Mouse Monoclonal Antibody [Clone ID: 8F10-G10]

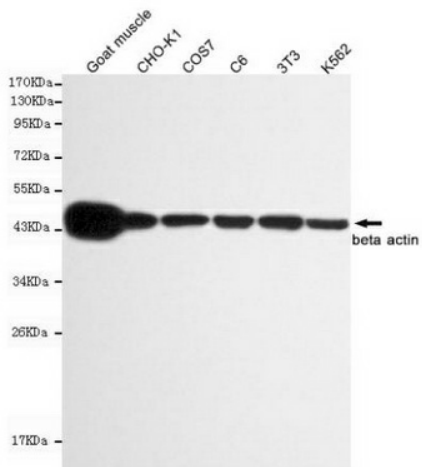
Product data:

Product Type:	Primary Antibodies
Clone Name:	8F10-G10
Applications:	WB
Recommend Dilution:	WB: 1:10000
Reactivity:	Arabidopsis, Goat, Hamster, Human, Monkey, Mouse, Rabbit, Rat, Saccharomyces cerevisiae, Zebrafish, Pichia pastoris, Leaf of rice, Cucumber, Chlamydomonas, Drosophila melanogaster
Host:	Mouse
Isotype:	IgG2b
Clonality:	Monoclonal
Immunogen:	The immunogen for beta-actin antibody: purified recombinant human beta actin protein fragments expressed in E.coli.
Formulation:	Purified mouse monoclonal in PB(pH 7.4) containing with 0.02% sodium azide and 50% glycerol.
Purification:	Affinity purified
Predicted Protein Size:	45 kDa
Gene Name:	actin, beta
Database Link:	NP_001092 Entrez Gene 11461 Mouse Entrez Gene 81822 Rat Entrez Gene 574285 Monkey Entrez Gene 60 Human
Background:	This gene encodes one of six different actin proteins. Actins are highly conserved proteins that are involved in cell motility, structure, and integrity. This actin is a major constituent of the contractile apparatus and one of the two nonmuscle cytoskeletal actins. [provided by RefSeq, Jul 2008]
Synonyms:	BRWS1; PS1TP5BP1
Protein Families:	ES Cell Differentiation/IPS
Protein Pathways:	Adherens junction, Arrhythmogenic right ventricular cardiomyopathy (ARVC), Dilated cardiomyopathy, Focal adhesion, Hypertrophic cardiomyopathy (HCM), Leukocyte transendothelial migration, Pathogenic Escherichia coli infection, Regulation of actin cytoskeleton, Tight junction, Vibrio cholerae infection, Viral myocarditis

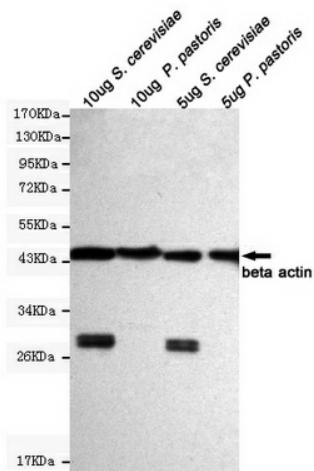


[View online »](#)

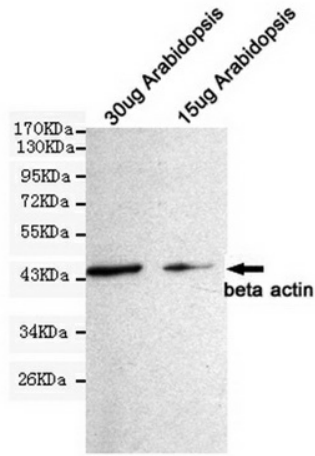
Product images:



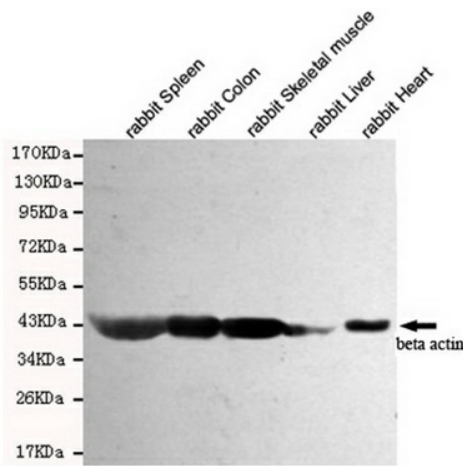
Western blot detection of beta actin in C6, 3T3, COS7, CHO-k1, K562 and Goat muscle cell lysates using beta actin mouse mAb (1:10000 diluted). Predicted band size: 45 kDa. Observed band size: 45 kDa.



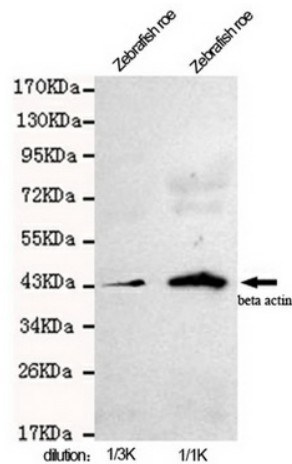
Western blot detection of beta actin in 5ug & 10ug *S. cerevisiae* and 5ug & 10ug *P. pastoris* cell lysates using beta actin mouse mAb (1:5000 diluted). Predicted band size: 45 kDa. Observed band size: 45 kDa.



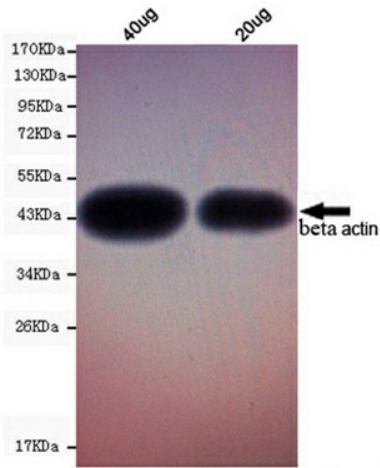
Western blot detection of beta actin in 15ug Arabidopsis and 30ug Arabidopsis cell lysates using beta actin mouse mAb (1:1000diluted).Predicted band size:45KDa.Observed band size:45KDa.



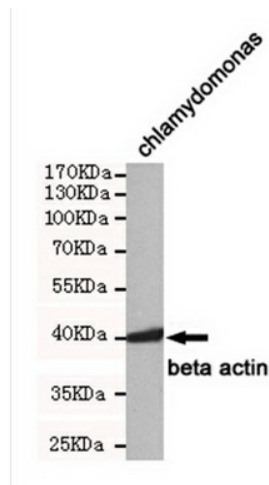
Western blot detection of beta actin in Rabbit Spleen, Rabbit Colon, Rabbit Skeletal muscle, Rabbit Liver and Rabbit Heart cell lysates using beta actin mouse mAb (1:5000 diluted).Predicted band size:45KDa.Observed band size:45KDa.



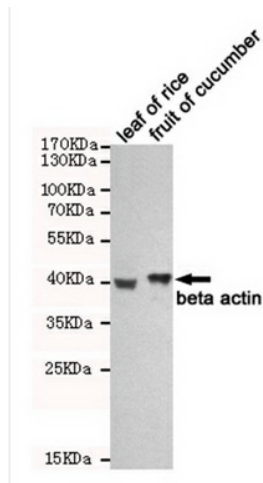
Western blot detection of beta actin in zebrafish roe cell lysates using beta actin mouse mAb (1:1000-1:3000 diluted).Predicted band size:45KDa.Observed band size:45KDa.



Western blot detection of beta actin in 20ug & 40ug Fruit fly (*Drosophila melanogaster*) cell lysates using beta actin mouse mAb (1:3000 diluted). Predicted band size: 45KDa. Observed band size: 45KDa.



Western blot detection of beta actin in *Chlamydomonas* cell lysates using beta actin mouse mAb (1:1000 diluted). Predicted band size: 45KDa. Observed band size: 45KDa.



Western blot detection of beta actin in leaf of rice and fruit of cucumber cell lysates using beta actin mouse mAb (1:1000 diluted). Predicted band size: 45KDa. Observed band size: 45KDa.