

Product datasheet for TA347052

SMC1 (SMC1A) Mouse Monoclonal Antibody [Clone ID: 4C5-C8-A11]

Product data:

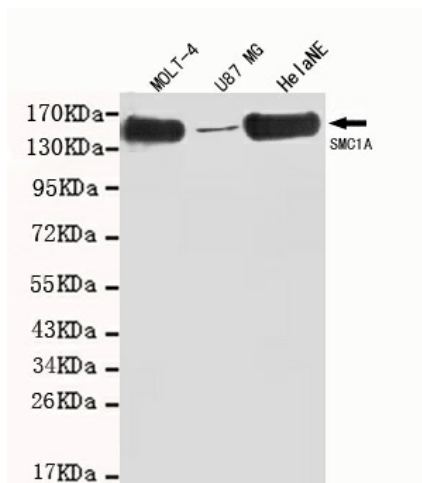
Product Type:	Primary Antibodies
Clone Name:	4C5-C8-A11
Applications:	IF, WB
Recommend Dilution:	WB: 1:1000, IF: 1:100
Reactivity:	Human
Host:	Mouse
Isotype:	IgG1
Clonality:	Monoclonal
Immunogen:	The immunogen for SMC1A antibody: purified recombinant human SMC1A(C-term.) protein fragments expressed in E.coli.
Formulation:	Purified mouse monoclonal antibody in PBS(pH 7.4) containing with 0.02% sodium azide and 50% glycerol.
Purification:	Affinity purified
Predicted Protein Size:	143 kDa
Gene Name:	structural maintenance of chromosomes 1A
Database Link:	NP_006297 Entrez Gene 8243 Human
Background:	Proper cohesion of sister chromatids is a prerequisite for the correct segregation of chromosomes during cell division. The cohesin multiprotein complex is required for sister chromatid cohesion. This complex is composed partly of two structural maintenance of chromosomes (SMC) proteins, SMC3 and either SMC1L2 or the protein encoded by this gene. Most of the cohesin complexes dissociate from the chromosomes before mitosis, although those complexes at the kinetochore remain. Therefore, the encoded protein is thought to be an important part of functional kinetochores. In addition, this protein interacts with BRCA1 and is phosphorylated by ATM, indicating a potential role for this protein in DNA repair. This gene, which belongs to the SMC gene family, is located in an area of the X-chromosome that escapes X inactivation. [provided by RefSeq, Jul 2008]
Synonyms:	CDLS2; DXS423E; SB1.8; SMC1; SMC1alpha; SMC1L1; SMCB
Protein Families:	Druggable Genome



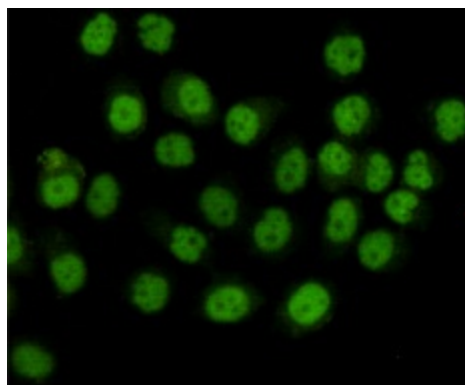
[View online »](#)

Protein Pathways: Cell cycle, Oocyte meiosis

Product images:



Western blot detection of SMC1A (C-term) in MOLT-4, U87 MG and HeLaNE cell lysates using SMC1A (N-terminus) mouse mAb (1:1000 diluted). Predicted band size: 143 kDa. Observed band size: 143 kDa.



Immunocytochemistry staining of HeLa cells fixed with 4% Paraformaldehyde and using anti-SMC1A mouse mAb (dilution 1:100).