

Product datasheet for TA500014

BMP4 Mouse Monoclonal Antibody [Clone ID: OTI6B7]

Product data:

Product Type:	Primary Antibodies
Clone Name:	OTI6B7
Applications:	IF, WB
Recommend Dilution:	WB: 1:100000, IF (1:100)
Reactivity:	Human
Host:	Mouse
Isotype:	IgG1
Clonality:	Monoclonal
Immunogen:	Recombinant fragment expressed in E.coli corresponding to amino acids 293-408 of human BMP4
Formulation:	PBS (pH 7.3) containing 1% BSA, 50% glycerol and 0.02% sodium azide.
Concentration:	0.42 mg/ml
Purification:	Purified from mouse ascites fluids or tissue culture supernatant by affinity chromatography (protein A/G)
Predicted Protein Size:	46.4 kDa
Gene Name:	bone morphogenetic protein 4
Database Link:	NP 570911 Entrez Gene 652 Human
Background:	BMP4 is a member of the bone morphogenetic protein family which is part of the transforming growth factor-beta superfamily. The superfamily includes large families of growth and differentiation factors. Bone morphogenetic proteins were originally identified by an ability of demineralized bone extract to induce endochondral osteogenesis in vivo in an extraskelatal site. This particular family member plays an important role in the onset of endochondral bone formation in humans, and a reduction in expression has been associated with a variety of bone diseases, including the heritable disorder Fibrodysplasia Ossificans Progressiva.
Synonyms:	BMP2B; BMP2B1; MCOPS6; OFC11; ZYME

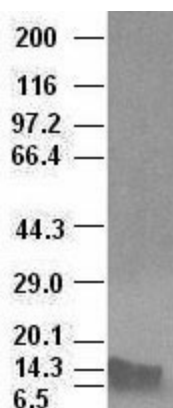


[View online »](#)

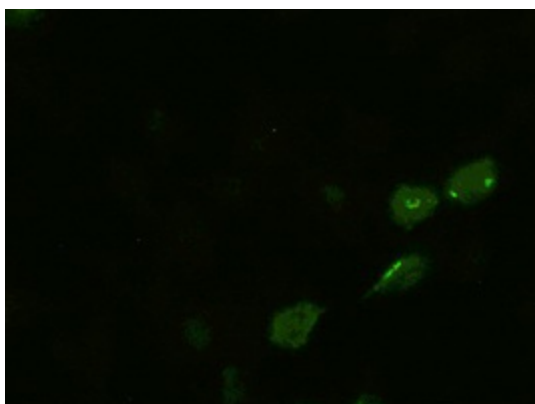
Protein Families: Adult stem cells, Cancer stem cells, Druggable Genome, Embryonic stem cells, Induced pluripotent stem cells, Secreted Protein, Stem cell relevant signaling - TGFb/BMP signaling pathway

Protein Pathways: Basal cell carcinoma, Hedgehog signaling pathway, Pathways in cancer, TGF-beta signaling pathway

Product images:



BMP4 antibody (6B7) at 1:100000 dilution +
Recombinant human BMP4 (Cat# [RC219979])



Anti-BMP4 mouse monoclonal antibody
(TA500014) immunofluorescent staining of HeLa
cells transiently transfected by pCMV6-ENTRY
BMP4 ([RC219979])