

Product datasheet for TA501227

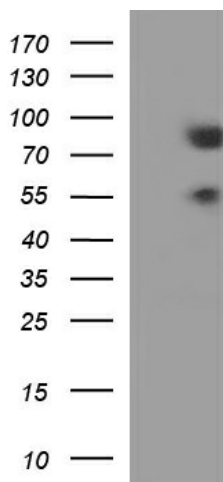
BMAL1 (ARNTL) Mouse Monoclonal Antibody [Clone ID: OT11H6]

Product data:

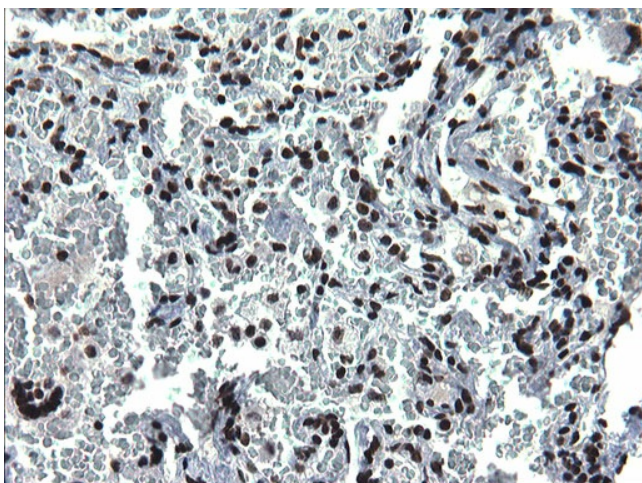
Product Type:	Primary Antibodies
Clone Name:	OT11H6
Applications:	IHC, WB
Recommend Dilution:	WB 1:4000, IHC 1:150
Reactivity:	Human
Host:	Mouse
Isotype:	IgG1
Clonality:	Monoclonal
Immunogen:	Full length human recombinant protein of human ARNTL(NP_001169) produced in HEK293T cell.
Formulation:	PBS (PH 7.3) containing 1% BSA, 50% glycerol and 0.02% sodium azide.
Concentration:	1 mg/ml
Purification:	Purified from mouse ascites fluids or tissue culture supernatant by affinity chromatography (protein A/G)
Predicted Protein Size:	68.5 kDa
Gene Name:	aryl hydrocarbon receptor nuclear translocator like
Database Link:	NP_001169 Entrez Gene 406 Human
Background:	The protein encoded by this gene is a basic helix-loop-helix protein that forms a heterodimer with CLOCK. This complex binds an E-box upstream of the PER1 gene, activating this gene and possibly other circadian rhythm-associated genes. Three transcript variants encoding two different isoforms have been found for this gene. [provided by RefSeq, Jul 2008]
Synonyms:	bHLHe5; BMAL1; BMAL1c; JAP3; MOP3; PASD3; TIC
Protein Families:	Druggable Genome, Transcription Factors
Protein Pathways:	Circadian rhythm - mammal



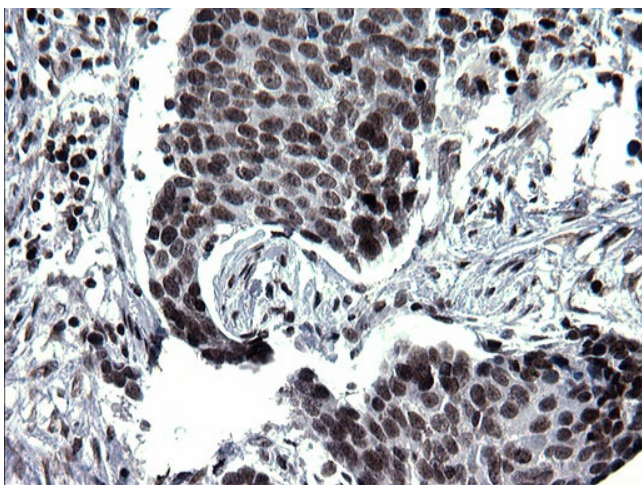
[View online »](#)

Product images:

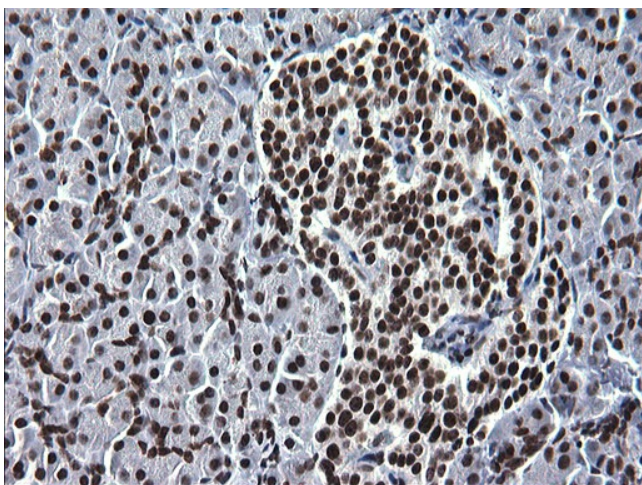
HEK293T cells were transfected with the pCMV6-ENTRY control (Left lane) or pCMV6-ENTRY ARNTL ([RC207870], Right lane) cDNA for 48 hrs and lysed. Equivalent amounts of cell lysates (5 ug per lane) were separated by SDS-PAGE and immunoblotted with anti-ARNTL. Positive lysates [LY400474] (100ug) and [LC400474] (20ug) can be purchased separately from OriGene.



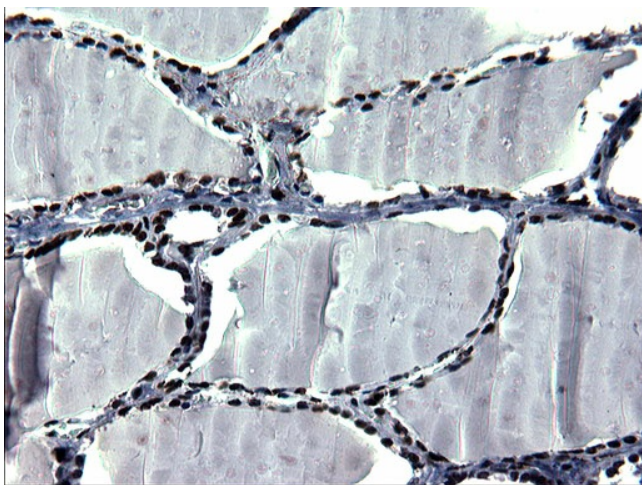
Immunohistochemical staining of paraffin-embedded Human lung tissue within the normal limits using anti-ARNTL mouse monoclonal antibody. (Heat-induced epitope retrieval by 1 mM EDTA in 10mM Tris, pH8.5, 120°C for 3min, TA501227)



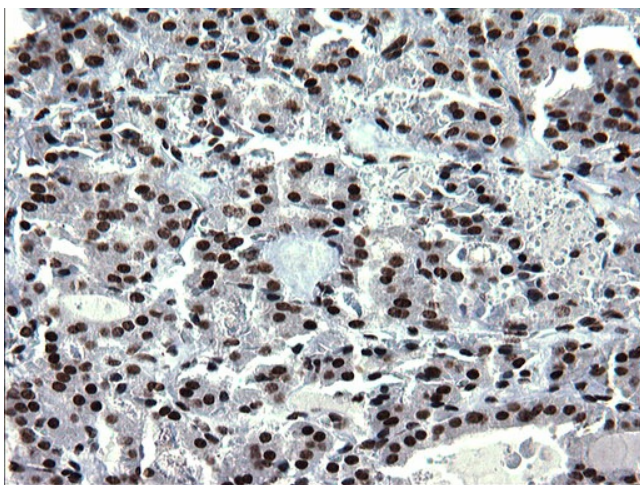
Immunohistochemical staining of paraffin-embedded Carcinoma of Human lung tissue using anti-ARNTL mouse monoclonal antibody. (Heat-induced epitope retrieval by 1 mM EDTA in 10mM Tris, pH8.5, 120°C for 3min, TA501227)



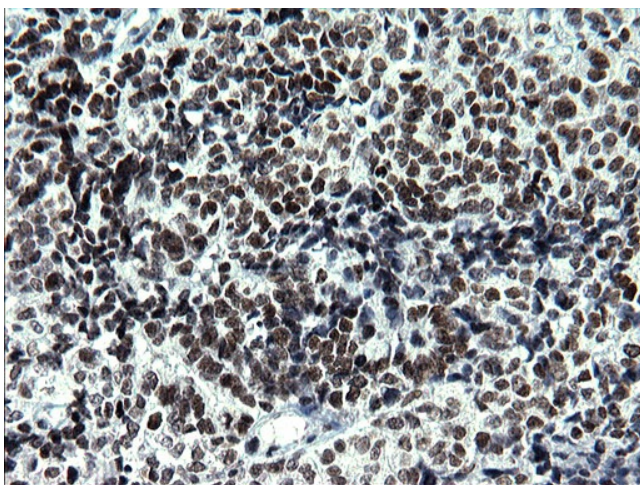
Immunohistochemical staining of paraffin-embedded Human pancreas tissue within the normal limits using anti-ARNTL mouse monoclonal antibody. (Heat-induced epitope retrieval by 1 mM EDTA in 10mM Tris, pH8.5, 120°C for 3min, TA501227)



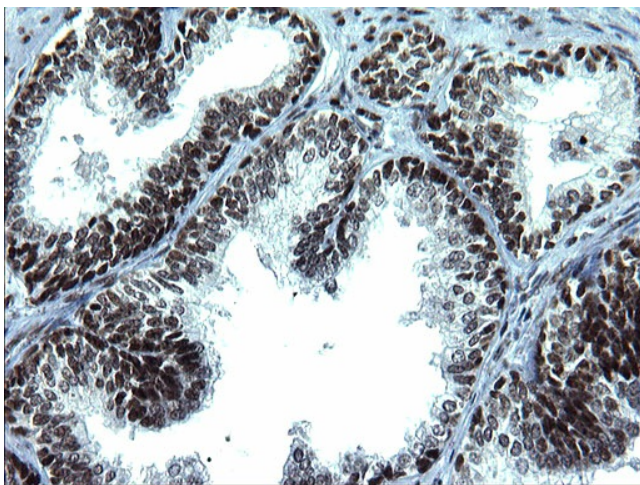
Immunohistochemical staining of paraffin-embedded Human thyroid tissue within the normal limits using anti-ARNTL mouse monoclonal antibody. (Heat-induced epitope retrieval by 1 mM EDTA in 10mM Tris, pH8.5, 120°C for 3min, TA501227)



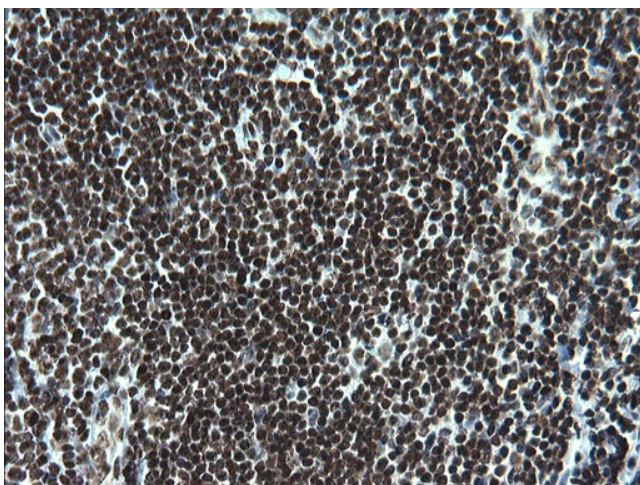
Immunohistochemical staining of paraffin-embedded Carcinoma of Human thyroid tissue using anti-ARNTL mouse monoclonal antibody. (Heat-induced epitope retrieval by 1 mM EDTA in 10mM Tris, pH8.5, 120°C for 3min, TA501227)



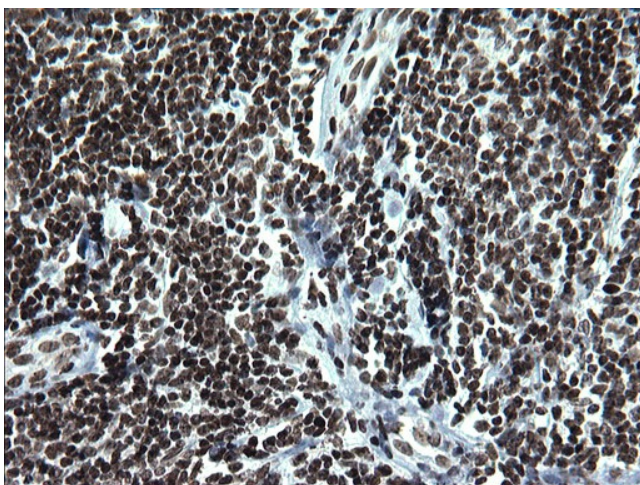
Immunohistochemical staining of paraffin-embedded Adenocarcinoma of Human endometrium tissue using anti-ARNTL mouse monoclonal antibody. (Heat-induced epitope retrieval by 1 mM EDTA in 10mM Tris, pH8.5, 120°C for 3min, TA501227)



Immunohistochemical staining of paraffin-embedded Human prostate tissue within the normal limits using anti-ARNTL mouse monoclonal antibody. (Heat-induced epitope retrieval by 1 mM EDTA in 10mM Tris, pH8.5, 120°C for 3min, TA501227)



Immunohistochemical staining of paraffin-embedded Human lymph node tissue within the normal limits using anti-ARNTL mouse monoclonal antibody. (Heat-induced epitope retrieval by 1 mM EDTA in 10mM Tris, pH8.5, 120°C for 3min, TA501227)



Immunohistochemical staining of paraffin-embedded Human lymphoma tissue using anti-ARNTL mouse monoclonal antibody. (Heat-induced epitope retrieval by 1 mM EDTA in 10mM Tris, pH8.5, 120°C for 3min, TA501227)