

## Product datasheet for **TA503298**

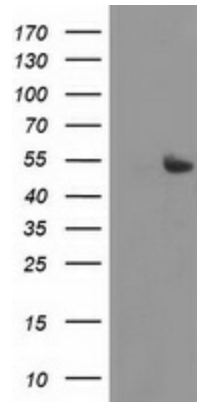
### **CARKL (SHPK) Mouse Monoclonal Antibody [Clone ID: OTI4E9]**

#### **Product data:**

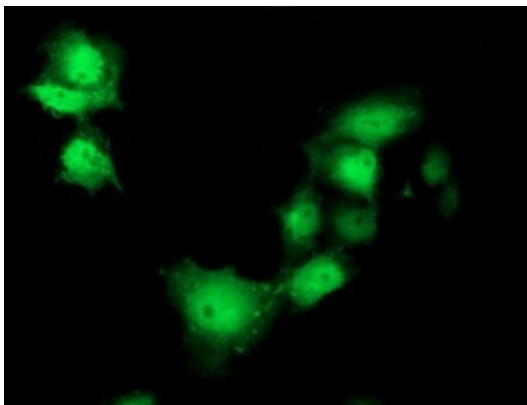
<b>Product Type:</b>	Primary Antibodies
<b>Clone Name:</b>	OTI4E9
<b>Applications:</b>	FC, IF, WB
<b>Recommend Dilution:</b>	WB 1:2000, IF 1:100, FLOW 1:100
<b>Reactivity:</b>	Human
<b>Host:</b>	Mouse
<b>Isotype:</b>	IgG2a
<b>Clonality:</b>	Monoclonal
<b>Immunogen:</b>	Full length human recombinant protein of human SHPK(NP_037408) produced in HEK293 cell.
<b>Formulation:</b>	PBS (PH 7.3) containing 1% BSA, 50% glycerol and 0.02% sodium azide.
<b>Concentration:</b>	0.92 mg/ml
<b>Purification:</b>	Purified from mouse ascites fluids or tissue culture supernatant by affinity chromatography (protein A/G)
<b>Predicted Protein Size:</b>	51.3 kDa
<b>Gene Name:</b>	sedoheptulokinase
<b>Database Link:</b>	<a href="#">NP_037408 Entrez Gene 23729 Human</a>
<b>Background:</b>	The protein encoded by this gene has weak homology to several carbohydrate kinases, a class of proteins involved in the phosphorylation of sugars as they enter a cell, inhibiting return across the cell membrane. Sequence variation between this novel gene and known carbohydrate kinases suggests the possibility of a different substrate, cofactor or changes in kinetic properties distinguishing it from other carbohydrate kinases. The gene resides in a region commonly deleted in cystinosis patients, suggesting a role as a modifier for the cystinosis phenotype. The genomic region is also rich in Alu repetitive sequences, frequently involved in chromosomal rearrangements. [provided by RefSeq]. COMPLETENESS: complete on the 3' end.
<b>Synonyms:</b>	CARKL; SHK
<b>Protein Families:</b>	Druggable Genome



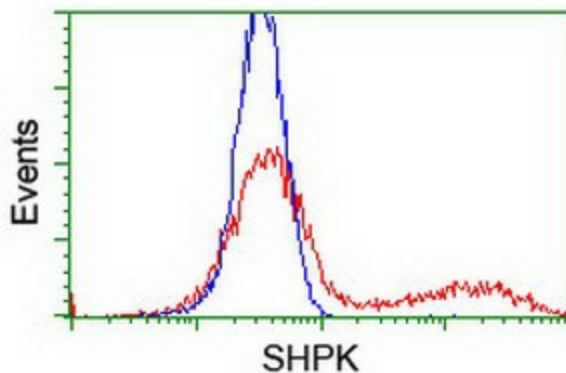
[View online »](#)

**Product images:**

HEK293T cells were transfected with the pCMV6-ENTRY control (Left lane) or pCMV6-ENTRY SHPK ([RC204421], Right lane) cDNA for 48 hrs and lysed. Equivalent amounts of cell lysates (5 ug per lane) were separated by SDS-PAGE and immunoblotted with anti-SHPK. Positive lysates [LY415695] (100ug) and [LC415695] (20ug) can be purchased separately from OriGene.



Anti-SHPK mouse monoclonal antibody (TA503298) immunofluorescent staining of COS7 cells transiently transfected by pCMV6-ENTRY SHPK ([RC204421]).



HEK293T cells transfected with either [RC204421] overexpress plasmid (Red) or empty vector control plasmid (Blue) were immunostained by anti-SHPK antibody (TA503298), and then analyzed by flow cytometry.