

Product datasheet for **TA503803**

FAM119A (METTL21A) Mouse Monoclonal Antibody [Clone ID: OTI2D3]

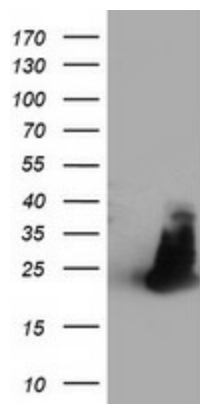
Product data:

Product Type:	Primary Antibodies
Clone Name:	OTI2D3
Applications:	IF, WB
Recommend Dilution:	WB 1:2000, IF 1:100
Reactivity:	Human
Host:	Mouse
Isotype:	IgG2b
Clonality:	Monoclonal
Immunogen:	Full length human recombinant protein of human FAM119A(NP_660323) produced in HEK293T cell.
Formulation:	PBS (PH 7.3) containing 1% BSA, 50% glycerol and 0.02% sodium azide.
Concentration:	0.91 mg/ml
Purification:	Purified from mouse ascites fluids or tissue culture supernatant by affinity chromatography (protein A/G)
Predicted Protein Size:	24.4 kDa
Gene Name:	methyltransferase like 21A
Database Link:	NP_660323 Entrez Gene 151194 Human
Synonyms:	FAM119A; HCA557b; HSPA-KMT

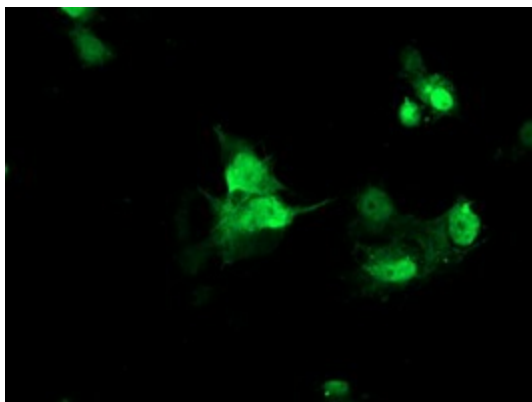


[View online »](#)

Product images:



HEK293T cells were transfected with the pCMV6-ENTRY control (Left lane) or pCMV6-ENTRY FAM119A ([RC207629], Right lane) cDNA for 48 hrs and lysed. Equivalent amounts of cell lysates (5 ug per lane) were separated by SDS-PAGE and immunoblotted with anti-FAM119A. Positive lysates [LY408004] (100ug) and [LC408004] (20ug) can be purchased separately from OriGene.



Anti-FAM119A mouse monoclonal antibody (TA503803) immunofluorescent staining of COS7 cells transiently transfected by pCMV6-ENTRY FAM119A ([RC207629]).