

Product datasheet for TA505197

Estrogen Related Receptor gamma (ESRRG) Mouse Monoclonal Antibody [Clone ID: OTI6G1]

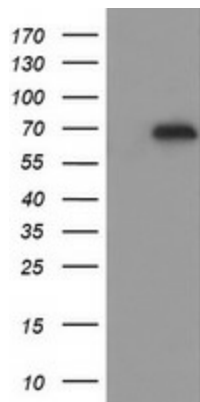
Product data:

Product Type:	Primary Antibodies
Clone Name:	OTI6G1
Applications:	IHC, WB
Recommend Dilution:	WB 1:2000, IHC 1:150
Reactivity:	Human
Host:	Mouse
Isotype:	IgG1
Clonality:	Monoclonal
Immunogen:	Human recombinant protein fragment corresponding to amino acids 24-263 of human ESRRG(NP_001429) produced in E.coli.
Formulation:	PBS (PH 7.3) containing 1% BSA, 50% glycerol and 0.02% sodium azide.
Concentration:	1 mg/ml
Purification:	Purified from mouse ascites fluids or tissue culture supernatant by affinity chromatography (protein A/G)
Predicted Protein Size:	51.1 kDa
Gene Name:	estrogen related receptor gamma
Database Link:	NP_001429 Entrez Gene 2104 Human
Synonyms:	ERR3; ERRgamma; NR3B3
Protein Families:	Druggable Genome, Nuclear Hormone Receptor, Transcription Factors

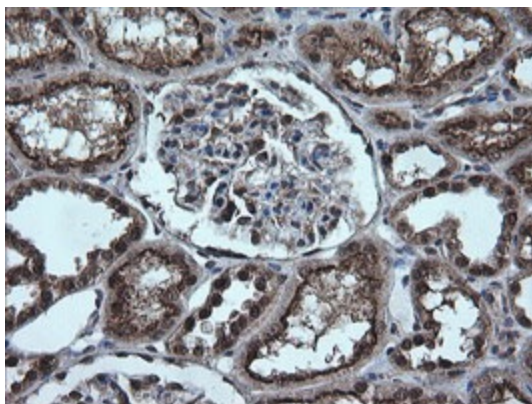


[View online »](#)

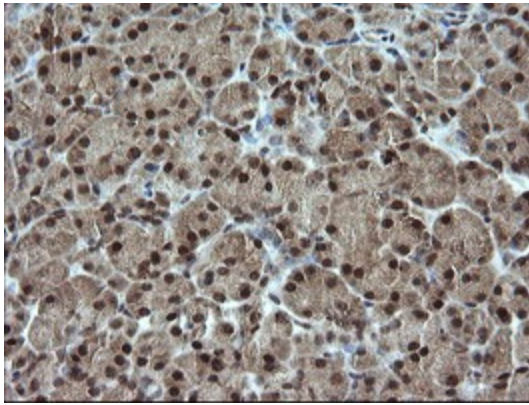
Product images:



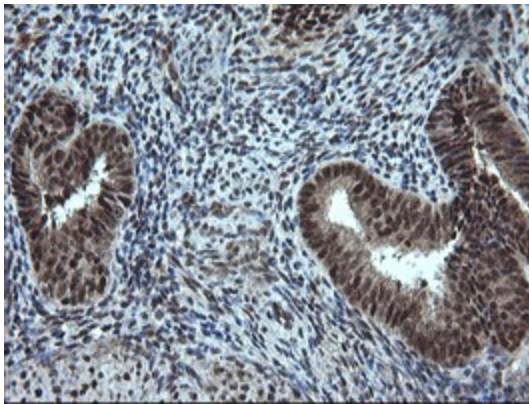
HEK293T cells were transfected with the pCMV6-ENTRY control (Left lane) or pCMV6-ENTRY ESRRG ([RC218233], Right lane) cDNA for 48 hrs and lysed. Equivalent amounts of cell lysates (5 ug per lane) were separated by SDS-PAGE and immunoblotted with anti-ESRRG. Positive lysates [LY400557] (100ug) and [LC400557] (20ug) can be purchased separately from OriGene.



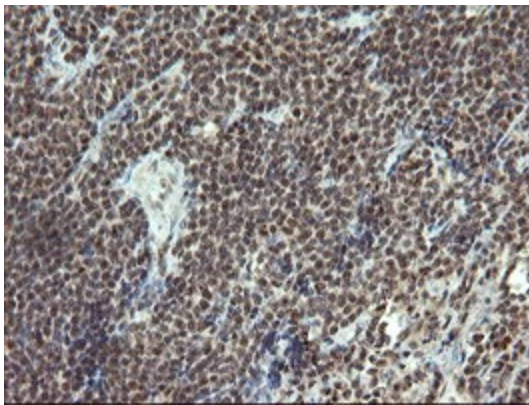
Immunohistochemical staining of paraffin-embedded Human Kidney tissue within the normal limits using anti-ESRRG mouse monoclonal antibody. (Heat-induced epitope retrieval by 10mM citric buffer, pH6.0, 100°C for 10min, TA505197)



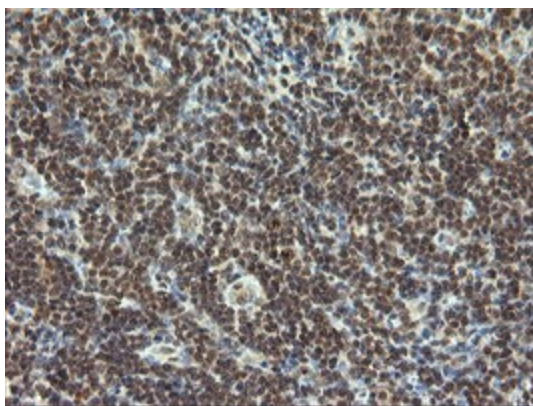
Immunohistochemical staining of paraffin-embedded Human pancreas tissue within the normal limits using anti-ESRRG mouse monoclonal antibody. (Heat-induced epitope retrieval by 10mM citric buffer, pH6.0, 100°C for 10min, TA505197)



Immunohistochemical staining of paraffin-embedded Human endometrium tissue within the normal limits using anti-ESRRG mouse monoclonal antibody. (Heat-induced epitope retrieval by 10mM citric buffer, pH6.0, 100°C for 10min, TA505197)



Immunohistochemical staining of paraffin-embedded Human lymphoma tissue using anti-ESRRG mouse monoclonal antibody. (Heat-induced epitope retrieval by 10mM citric buffer, pH6.0, 100°C for 10min, TA505197)



Immunohistochemical staining of paraffin-embedded Human tonsil within the normal limits using anti-ESRRG mouse monoclonal antibody. (Heat-induced epitope retrieval by 10mM citric buffer, pH6.0, 100°C for 10min, TA505197)