

## Product datasheet for **TA506403**

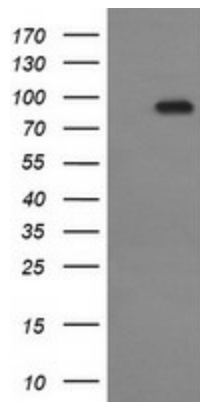
### **P cadherin (CDH3) Mouse Monoclonal Antibody [Clone ID: OTI2D5]**

#### **Product data:**

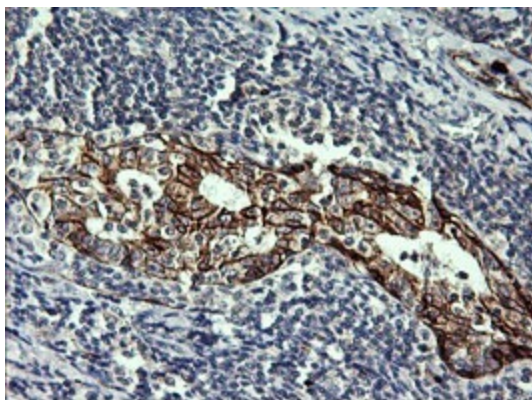
<b>Product Type:</b>	Primary Antibodies
<b>Clone Name:</b>	OTI2D5
<b>Applications:</b>	IF, IHC, WB
<b>Recommend Dilution:</b>	WB 1:4000, IHC 1:150, IF 1:100
<b>Reactivity:</b>	Human
<b>Host:</b>	Mouse
<b>Isotype:</b>	IgG2a
<b>Clonality:</b>	Monoclonal
<b>Immunogen:</b>	Full length human recombinant protein of human CDH3(NP_001784) produced in HEK293T cell.
<b>Formulation:</b>	PBS (PH 7.3) containing 1% BSA, 50% glycerol and 0.02% sodium azide.
<b>Concentration:</b>	1 mg/ml
<b>Purification:</b>	Purified from mouse ascites fluids or tissue culture supernatant by affinity chromatography (protein A/G)
<b>Predicted Protein Size:</b>	88.8 kDa
<b>Gene Name:</b>	cadherin 3
<b>Database Link:</b>	<a href="#">NP_001784 Entrez Gene 1001 Human</a>
<b>Background:</b>	This gene is a classical cadherin from the cadherin superfamily. The encoded protein is a calcium-dependent cell-cell adhesion glycoprotein comprised of five extracellular cadherin repeats, a transmembrane region and a highly conserved cytoplasmic tail. This gene is located in a six-cadherin cluster in a region on the long arm of chromosome 16 that is involved in loss of heterozygosity events in breast and prostate cancer. In addition, aberrant expression of this protein is observed in cervical adenocarcinomas. Mutations in this gene have been associated with congenital hypotrichosis with juvenile macular dystrophy. [provided by RefSeq, Jul 2008]
<b>Synonyms:</b>	CDHP; HJMD; PCAD
<b>Protein Families:</b>	Druggable Genome, Transmembrane
<b>Protein Pathways:</b>	Cell adhesion molecules (CAMs)



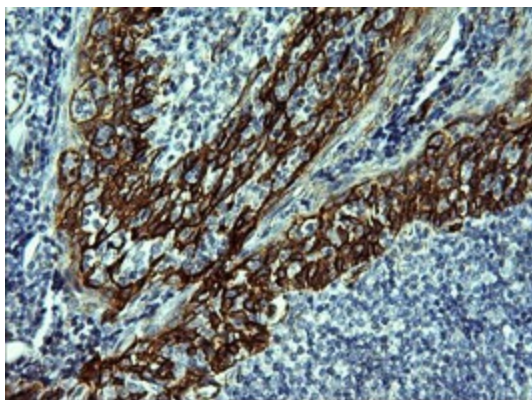
[View online »](#)

**Product images:**

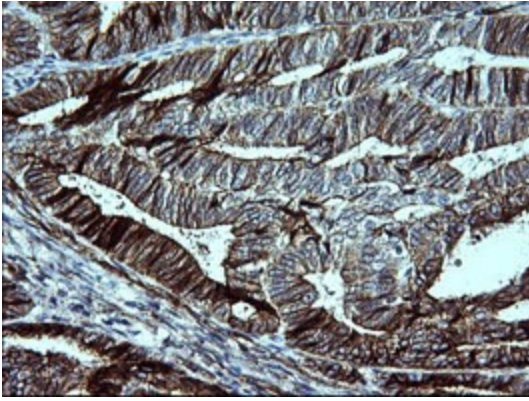
HEK293T cells were transfected with the pCMV6-ENTRY control (Left lane) or pCMV6-ENTRY CDH3 ([RC207346], Right lane) cDNA for 48 hrs and lysed. Equivalent amounts of cell lysates (5 ug per lane) were separated by SDS-PAGE and immunoblotted with anti-CDH3. Positive lysates [LY400683] (100ug) and [LC400683] (20ug) can be purchased separately from OriGene.



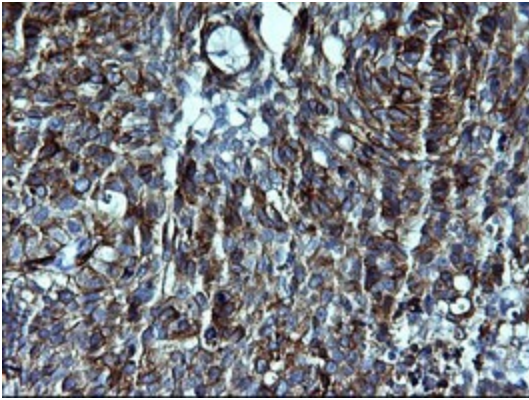
Immunohistochemical staining of paraffin-embedded Human lymphoma tissue using anti-CDH3 mouse monoclonal antibody. (Heat-induced epitope retrieval by 10mM citric buffer, pH6.0, 120°C for 3min, TA506403)



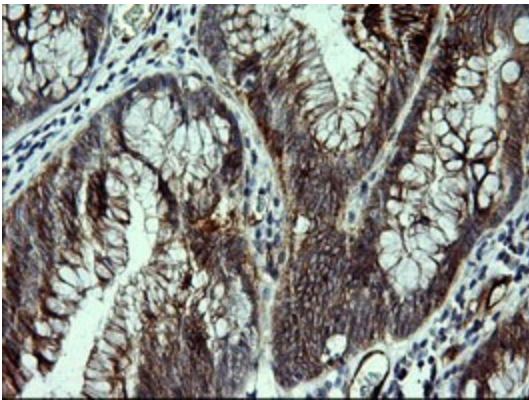
Immunohistochemical staining of paraffin-embedded Human lymph node tissue within the normal limits using anti-CDH3 mouse monoclonal antibody. (Heat-induced epitope retrieval by 10mM citric buffer, pH6.0, 120°C for 3min, TA506403)



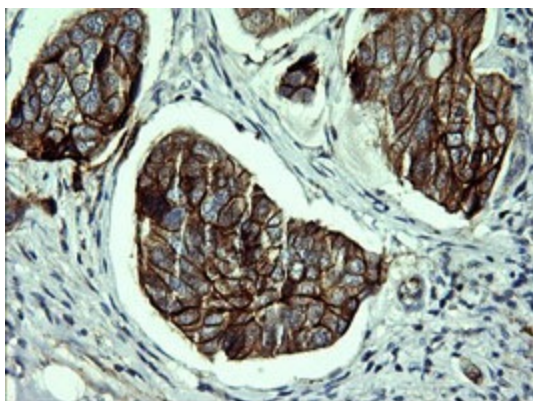
Immunohistochemical staining of paraffin-embedded Adenocarcinoma of Human endometrium tissue using anti-CDH3 mouse monoclonal antibody. (Heat-induced epitope retrieval by 10mM citric buffer, pH6.0, 120°C for 3min, TA506403)



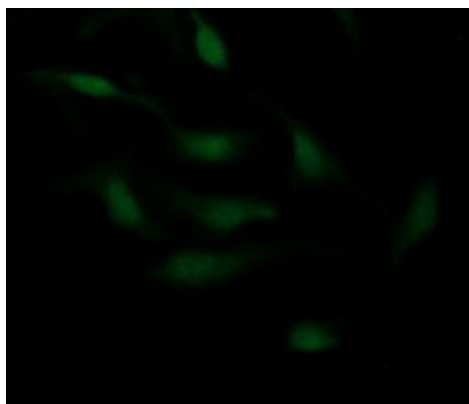
Immunohistochemical staining of paraffin-embedded Carcinoma of Human lung tissue using anti-CDH3 mouse monoclonal antibody. (Heat-induced epitope retrieval by 10mM citric buffer, pH6.0, 120°C for 3min, TA506403)



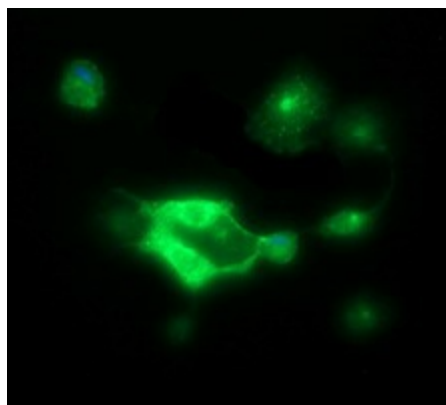
Immunohistochemical staining of paraffin-embedded Adenocarcinoma of Human colon tissue using anti-CDH3 mouse monoclonal antibody. (Heat-induced epitope retrieval by 10mM citric buffer, pH6.0, 120°C for 3min, TA506403)



Immunohistochemical staining of paraffin-embedded Adenocarcinoma of Human breast tissue using anti-CDH3 mouse monoclonal antibody. (Heat-induced epitope retrieval by 10mM citric buffer, pH6.0, 120°C for 3min, TA506403)



Immunofluorescent staining of HeLa cells using anti-CDH3 mouse monoclonal antibody (TA506403).



Anti-CDH3 mouse monoclonal antibody (TA506403) immunofluorescent staining of COS7 cells transiently transfected by pCMV6-ENTRY CDH3 ([RC207346]).