

Product datasheet for TA803387

Macro H2A.2 (H2AFY2) Mouse Monoclonal Antibody [Clone ID: OTI1F9]

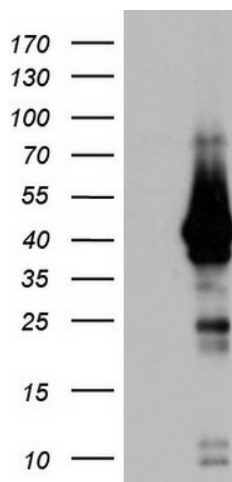
Product data:

Product Type:	Primary Antibodies
Clone Name:	OTI1F9
Applications:	IHC, WB
Recommend Dilution:	WB 1:2000, IHC 1:150
Reactivity:	Human
Host:	Mouse
Isotype:	IgG2a
Clonality:	Monoclonal
Immunogen:	Human recombinant protein fragment corresponding to amino acids 2-261 of human H2AFY2 (NP_061119) produced in E.coli.
Formulation:	PBS (PH 7.3) containing 1% BSA, 50% glycerol and 0.02% sodium azide.
Concentration:	1 mg/ml
Purification:	Purified from mouse ascites fluids or tissue culture supernatant by affinity chromatography (protein A/G)
Predicted Protein Size:	39.9 kDa
Gene Name:	H2A histone family member Y2
Database Link:	NP_061119 Entrez Gene 55506 Human
Synonyms:	macroH2A2
Protein Pathways:	Systemic lupus erythematosus

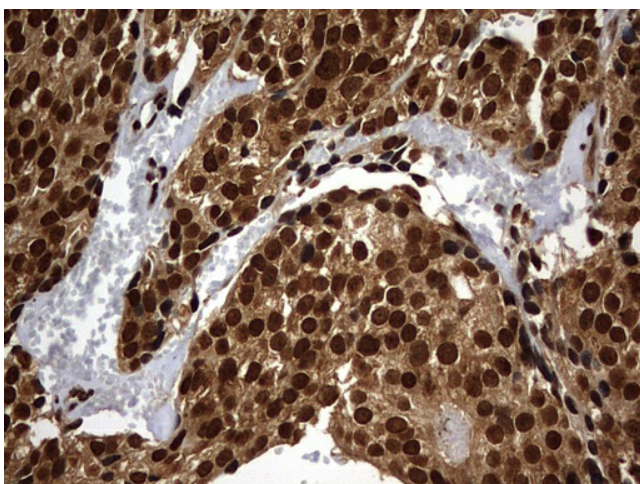


[View online »](#)

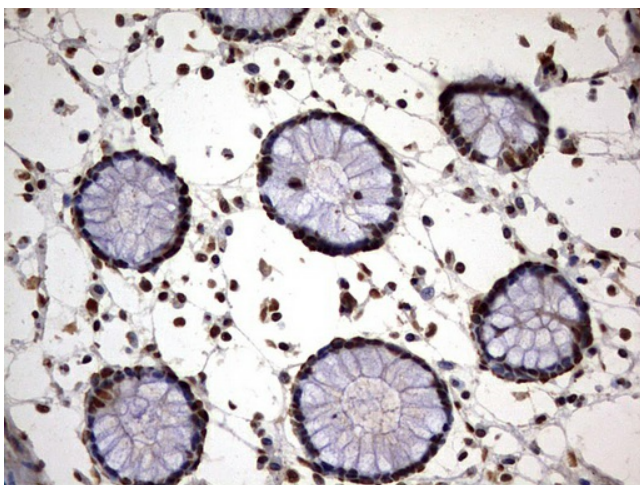
Product images:



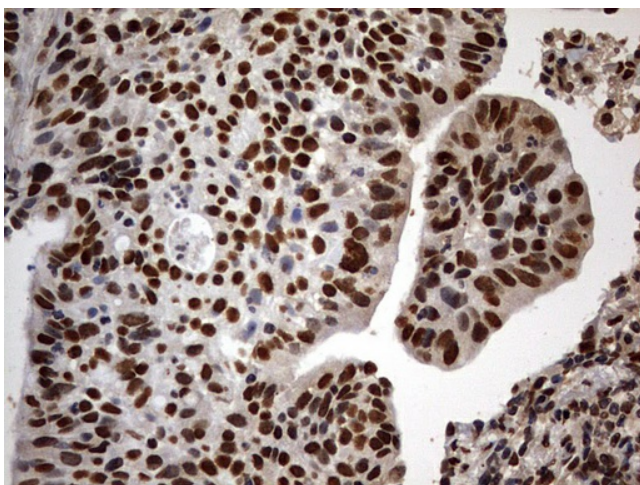
HEK293T cells were transfected with the pCMV6-ENTRY control (Left lane) or pCMV6-ENTRY H2AFY2 ([RC203699], Right lane) cDNA for 48 hrs and lysed. Equivalent amounts of cell lysates (5 ug per lane) were separated by SDS-PAGE and immunoblotted with anti-H2AFY2. Positive lysates [LY412957] (100ug) and [LC412957] (20ug) can be purchased separately from OriGene.



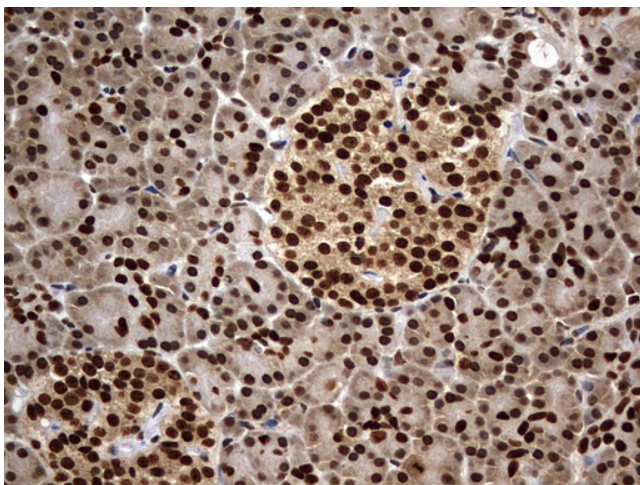
Immunohistochemical staining of paraffin-embedded Adenocarcinoma of Human breast tissue using anti-H2AFY2 mouse monoclonal antibody. (Heat-induced epitope retrieval by 10mM citric buffer, pH6.0, 120°C for 3min, TA803387)



Immunohistochemical staining of paraffin-embedded Human colon tissue within the normal limits using anti-H2AFY2 mouse monoclonal antibody. (Heat-induced epitope retrieval by 10mM citric buffer, pH6.0, 120°C for 3min, TA803387)



Immunohistochemical staining of paraffin-embedded Carcinoma of Human lung tissue using anti-H2AFY2 mouse monoclonal antibody. (Heat-induced epitope retrieval by 10mM citric buffer, pH6.0, 120°C for 3min, TA803387)



Immunohistochemical staining of paraffin-embedded Human pancreas tissue within the normal limits using anti-H2AFY2 mouse monoclonal antibody. (Heat-induced epitope retrieval by 10mM citric buffer, pH6.0, 120°C for 3min, TA803387)