

## Product datasheet for TA808352

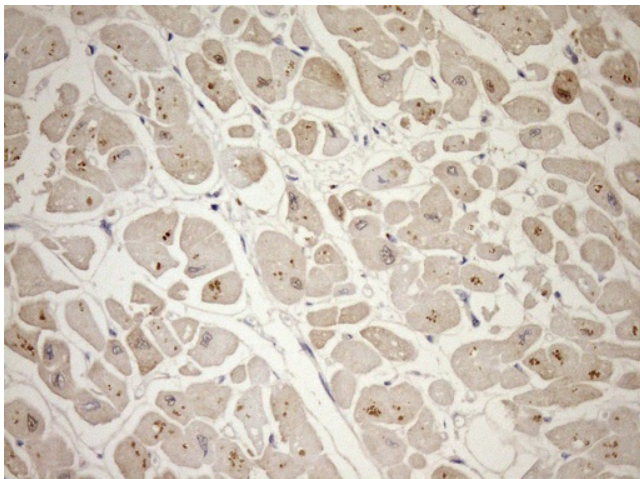
### Telethonin (TCAP) Mouse Monoclonal Antibody [Clone ID: OTI6D3]

#### Product data:

Product Type:	Primary Antibodies
Clone Name:	OTI6D3
Applications:	IHC
Recommend Dilution:	IHC 1:150
Reactivity:	Human
Host:	Mouse
Isotype:	IgG1
Clonality:	Monoclonal
Immunogen:	Full length human recombinant protein of human TCAP (NP_003664) produced in E.coli.
Formulation:	PBS (PH 7.3) containing 1% BSA, 50% glycerol and 0.02% sodium azide.
Concentration:	1 mg/ml
Purification:	Purified from mouse ascites fluids or tissue culture supernatant by affinity chromatography (protein A/G)
Predicted Protein Size:	18.9 kDa
Gene Name:	titin-cap
Database Link:	<a href="#">NP_003664 Entrez Gene 8557 Human</a>
Background:	Sarcomere assembly is regulated by the muscle protein titin. Titin is a giant elastic protein with kinase activity that extends half the length of a sarcomere. It serves as a scaffold to which myofibrils and other muscle related proteins are attached. This gene encodes a protein found in striated and cardiac muscle that binds to the titin Z1-Z2 domains and is a substrate of titin kinase, interactions thought to be critical to sarcomere assembly. Mutations in this gene are associated with limb-girdle muscular dystrophy type 2G. [provided by RefSeq, Jul 2008]
Synonyms:	CMD1N; CMH25; LGMD2G; T-cap; TELE; telethonin



[View online »](#)

**Product images:**

Immunohistochemical staining of paraffin-embedded Human adult heart tissue using anti-TCAP mouse monoclonal antibody. (Heat-induced epitope retrieval by Tris-EDTA, pH8.0, TA808352) (1:150)